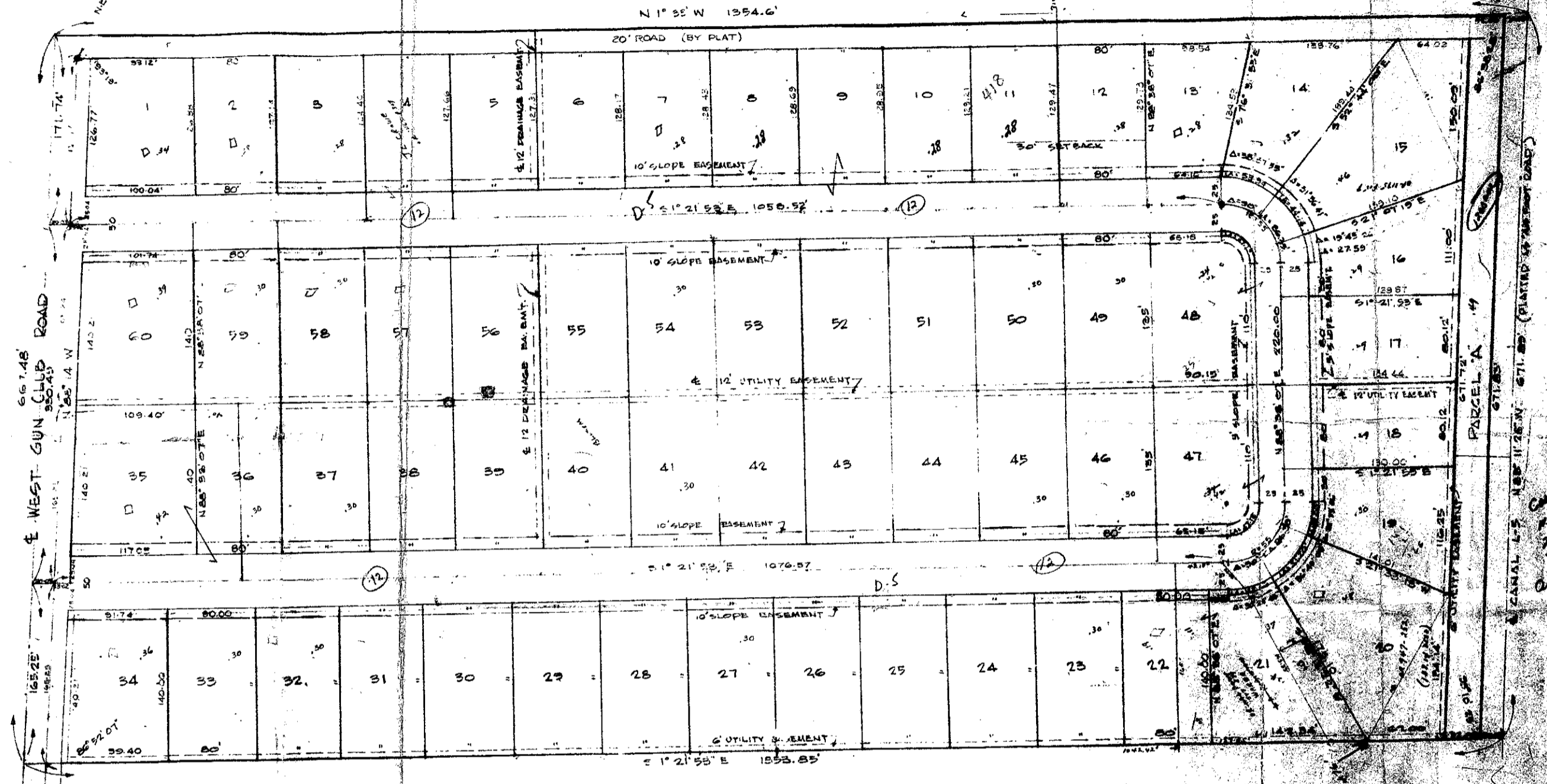


SHADYSIDE

A SUBDIVISION FOR
 CONSOLIDATED ENTERPRISES OF NORTH PALM BEACH, INC.
 BEING A REPLAT OF LOTS 40, 50, 51, & 52, MODEL LAND COMPANY'S SUB-
 DIVISION IN SECTION 22, TWP. 44S., R. 22E., A2B., AS RECORDED IN PLAT BOOK
 3 AT PAGE 80 IN AND FOR THE RECORDS OF PALM BEACH COUNTY
 FLORIDA, LESS THE WEST 650.01 F. FT.



WAS RUN TO CENTER OF ROAD
 L.W.D.D. CANAL E-3
 N 1° 52' W 1354.6'



7-1-65
 CONSOLIDATED ENTERPRISES OF NORTH PALM BEACH, INC.
 2000 W. PALM BEACH BLVD.
 PALM BEACH, FLORIDA
 OF 4000 ACRES

BASE IN
 1/24/67

PC 4202 09

AM 77

PROPOSED LAYOUT	
PREPARED BY WILLIAM G. WALLACE, INC. CIVIL ENGINEER & LAND SURVEYOR WEST PALM BEACH, FLORIDA	
DATE:	JULY 1965
SCALE:	1" = 50'